

Lady Eleanor Holles School

The Lady Eleanor Holles School was established in 1711, when a trust for its endowment as a Christian foundation was created under the will of Lady Eleanor Holles, daughter of the second Earl of Clare. The school occupied other premises in the City until 1878, when it moved to Hackney. It is now in Hampton in buildings which were opened in 1935 by HRH Princess Alice, Duchess of Gloucester.

† † (from here you can see the Church of St Giles Cripplegate)

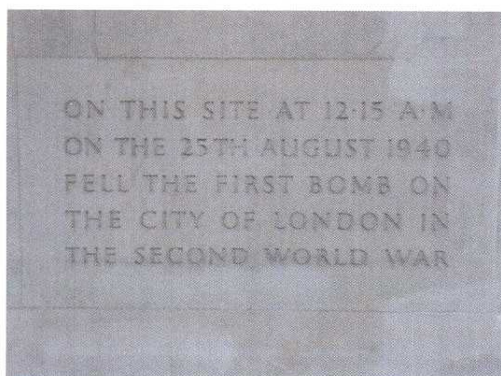
St Giles Cripplegate

Tradition has it that St Giles was born in Athens and of royal parents. He went to France c.AD666 and became a cave dwelling hermit. According to legend he saved a hind from hunting dogs and there is a carving in stone above the north door depicting this. He is associated amongst others with cripples and beggars. The church is close to the old Cripplegate and it may have been that the name came from a number of cripples that gathered here.



The original church is said to have been very small and may have been not much more than a shrine built in 1090 by Alfune, first almoner of the nearby Priory of St Bartholomew. The church was enlarged and rebuilt over the centuries although the church escaped the Great Fire the tower was heightened by John Bridges, 1682-4. It suffered great damage during World War II and was restored by Godfrey Allen and reopened again in 1960. A number of the furnishings came from St Luke's Old Street including the organ with

† † (leave here and turn left along Andrewes Highwalk)



The street that you can see below from here is Fore Street which was named many centuries ago as it lay before the City wall. The first bomb on the City of London of the Second World War fell here on 25th August 1940 at 12.15am.

† † (carry on until to you come to Willoughby Highwalk on your right, cross the bridge and bear left into St Alphage Highwalk)